

manual

MOUNTING - DISMOUNTING

ASSEMBLING - DISASSEMBLING
INSTRUCTION

TECHNICAL
INFORMATION

ET-GR-S
ET-AC-S

 **TAPRITE**

DSI
unique draught technologies

 **SCHROEDER**[™]
America

VINSERVICE[®]

ITALY

 **aalberts** dispense
technologies



DSI SERVICE – TEAM

Sales Department DSI Hamm

Jessica Kampmann
DSI Hamm D.A.CH, Asia, USA, Africa
Phone: +49 (0) 23 85 772 212
E-Mail: j.kampmann@aalbertsdispense.com

Sandra Leszynsky
Western Europe and UK, USA, Australia, Asia
Phone: +49 (0) 23 85 772 214
E-Mail: s.leszynsky@aalbertsdispense.com

Katja Spanke
Western Europe
Phone: +49 (0) 23 85 772 215
E-Mail: k.spanke@aalbertsdispense.com

Iryna Matyak
Eastern Europe
Phone: +49 (0) 23 85 772 216
E-Mail: i.matyak@aalbertsdispense.com

Sales Department DSI International

Joost Samyn
Sales Representative
Western Europe
Molenbergstraat 15
1700 Dilbeek
Belgium
Phone: +32 24 52 70 55
Mobil: +32 49 134 39 00
E-Mail: j.samyn@aalbertsdispense.com

Touch and Pour Systems Ltd
Philip Holt
Rufford House
Darwin Drive
Sherwood Energy Village
New Ollerton
Nottinghamshire
NG22 9GW
United Kingdom
Phone: +44 (0) 1623 836814
Fax: +44 (0) 1623 239224
E-Mail: sales@tapsystems.co.uk

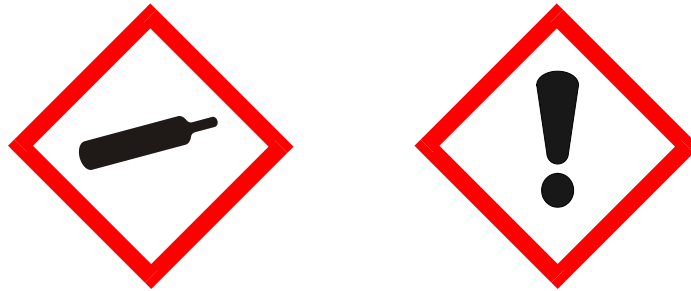
Keg Service
Tadeusz Gonciarczyk
Sales Representative
Eastern Europe
UL. Walowa 3
51-523 Wroclaw
Poland
Phone: +48 71 34 66 632
Mobil: +48 50 51 54 152
E-Mail: biuro@keg-service.pl

OJA
Olaf Jakob
Sales Representative
Germany, Austria, Switzerland
Wortmannsweg 14
44149 Dortmund
Germany
Phone: +49 (0) 231 22 50 740
Fax: +49 (0) 231 22 50 741
E-Mail: o.j.a@t-online.de

SAFETY AND QUALITY

Health and safety

Incorrect assembly/installation may damage the keg spear and poses the risk that components may occasionally come off during initial pressurization and can cause harm to product and person



Quality

Specialised sealing systems made of high-grade materials are in daily utilisation with all our types of extractor tubes. Due to continuous improvement of our technology we are able to equip all A-type and G-type systems with a two-year warranty.

LIST OF CONTENTS

1. Mounting Instruction
2. Dismounting Instruction
3. Disassembling Instruction
4. Assembling Instruction
5. Tool List
6. Technical Information
7. Connections

MOUNTING INSTRUCTION

EXTRACTOR TUBE ET-AC-S / ET-GR-S

1. Mounting Instruction

ET-AC-S



ET-GR-S



MOUNTING INSTRUCTION

EXTRACTOR TUBE ET-AC-S / ET-GR-S

Fig. 01



1. Moisten the extractor tube with water.

Fig. 02



2. Check the keg neck is clean. Clean the keg neck from any contaminations.

Fig. 03



3. Check the sealing ring is not damaged and is positioned correctly.

MOUNTING INSTRUCTION

EXTRACTOR TUBE ET-AC-S / ET-GR-S

Fig. 04



4. Check if lock/safety is O.K. Insert the Extractor Tube straight.

Fig. 05



5. Push the Extractor Tube in the Keg by hand.

Fig. 06



6. Tighten the extractor tube (rotate it clockwise) with the DSI screw-in/screw-out tool. The mounting torque (continuous) must be 80 ± 5 Nm.

DISMOUNTING INSTRUCTION

EXTRACTOR TUBE ET-AC-S / ET-GR-S

2. Dismounting Instruction

ET-AC-S



ET-GR-S



DISMOUNTING INSTRUCTION

EXTRACTOR TUBE ET-AC-S / ET-GR-S

Fig. 08



1. Decompress the keg e. g. by means of the DSI decompression tool.

Fig. 09



2. Unscrew the extractor tube (rotate it counter-clockwise) with the DSI screw-in/screw-out tool.

Fig. 10



3. Click the tool on the extractor tube by pushing it onto the rubber valve.

ATTENTION PLEASE: Do not press the handles!

DISMOUNTING INSTRUCTION

EXTRACTOR TUBE ET-AC-S / ET-GR-S

Fig. 11



4. Lift the tool with the locked extractor tube a little bit and rotate it clockwise to unlock the bayonet-plate while holding the body.

Fig. 12



5. Push the tool down with one hand while holding the flange with the other hand.

Fig. 13



6. Tool is down on flange.

DISMOUNTING INSTRUCTION

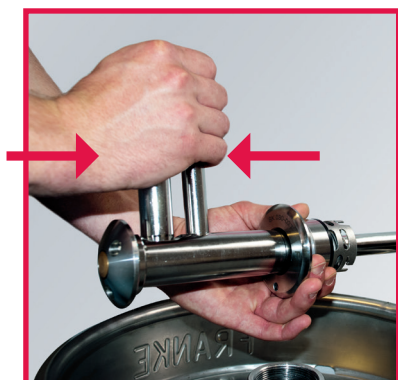
EXTRACTOR TUBE ET-AC-S / ET-GR-S

Fig. 14



4. Lift the spear body upwards at the tool. Now the extractor tube can be taken out of the keg neck.

Fig. 15



5. Press the handles together to release the tool. The body is separated from the down tube. To complete disassembling go to page 14/15 and follow the instructions.

DISASSEMBLING INSTRUCTION

EXTRACTOR TUBE ET-AC-S / ET-GR-S

3. Disassembling instruction

ET-AC-S



ET-GR-S



DISASSEMBLING INSTRUCTION

EXTRACTOR TUBE ET-AC-S / ET-GR-S

Fig. 16



1. Push down and hold the (de-) mounting haft with the two pins in the holes to relax the spring.

Fig. 17



2. Take out the safety latch by pulling it down.

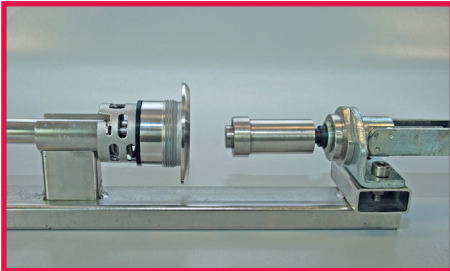
Fig. 18



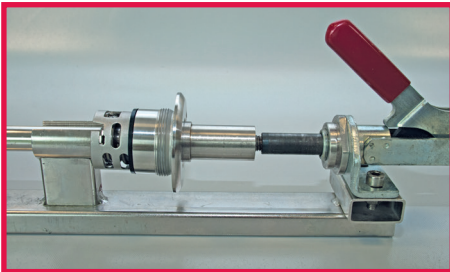
3. Take of the (de-) mounting tool.

DISASSEMBLING INSTRUCTION

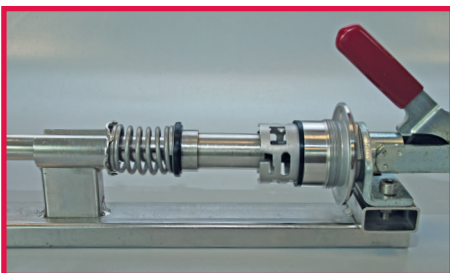
EXTRACTOR TUBE ET-AC-S / ET-GR-S



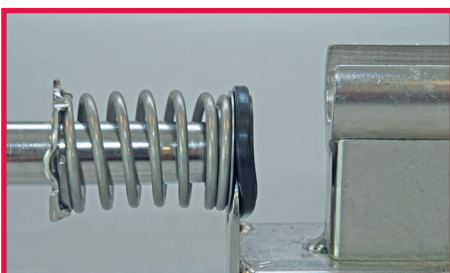
1. Push the handle of the DSI Tool backward. Place the extractor tube in the tool.



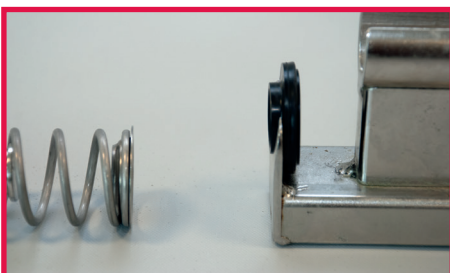
2. Push the handle forward to relax the spring.



3. Turn the body counter-clockwise and move it onto the ringnut. Push the handle backward to take the tube and the body out of the tool.



4. Remove the valve by pushing the fork (at the end of the tool) between the valve and the metal part and pulling it away from the tool.



5. Take off the remaining parts. The extractor tube is disassembled.

ASSEMBLING INSTRUCTION

EXTRACTOR TUBE ET-AC-S / ET-GR-S

4. Assembling instruction

ET-AC-S

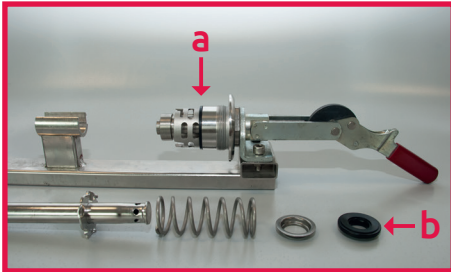


ET-GR-S

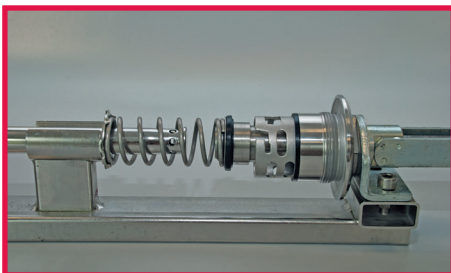


ASSEMBLING INSTRUCTION

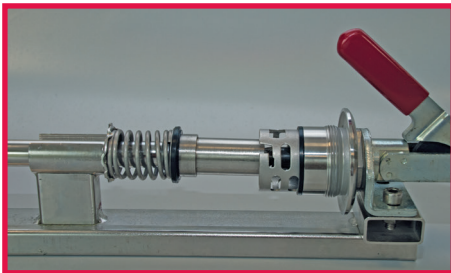
EXTRACTOR TUBE ET-AC-S / ET-GR-S



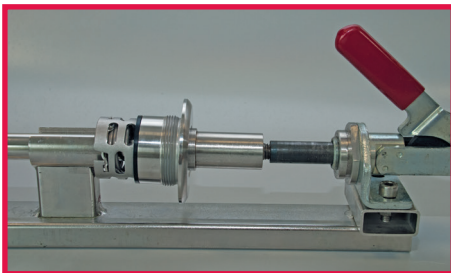
1. Replace the sealing ring on the body (a) and the main seal (b). Put the body onto the ringnut and keep all the parts ready. Before assembling, moisten the rubber parts with Water.



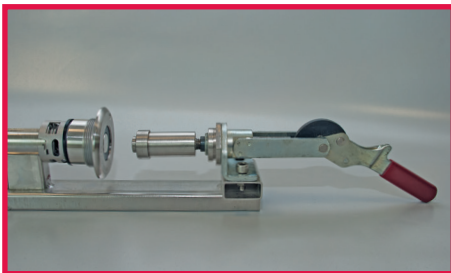
2. Place all the pieces in the correct sequence on the tube. Put the extractor tube in the tool.



3. Centre the spring between the guides on the locking plate. Mount the valve on the tube by pushing the handle forward.



4. Move the body to the locking plate and turn it clockwise after the body is positioned in the lugs. Check if lock/safety is correct and if the countersinking from the safety latch is in the correct position.



5. Push the handle backward in order to tension the spring and take out the extractor tube. Please check the correct position of the seals. Now install the safety latch to complete extractor tube assembling (go to page 18 and follow the instructions).

ASSEMBLING INSTRUCTION

EXTRACTOR TUBE ET-AC-S / ET-GR-S

Fig. 19



1. Push down and hold the (de-) mounting haft with the two pins in the holes to relax the spring.

Fig. 20



2. Positioned the safety latch in the body with the flat side against the tube and the bended side pointing to the top of the body (Fig. 20 circle).

Fig. 21



3. Release (de-) mounting tool to tense the spring. If the spring is not properly positioned, push it by a pin of the tool on the countersinking from the safety latch (Fig. 21 lower arrow).

TOOLS

EXTRACTOR TUBE ET-AC-S / ET-GR-S

5. Tool List

ET-AC-S

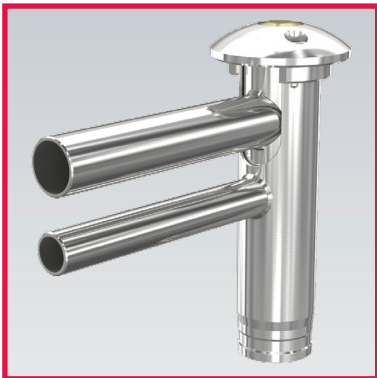


ET-GR-S



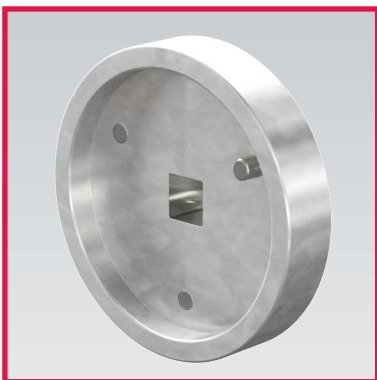
TOOLS

EXTRACTOR TUBE ET-AC-S / ET-GR-S



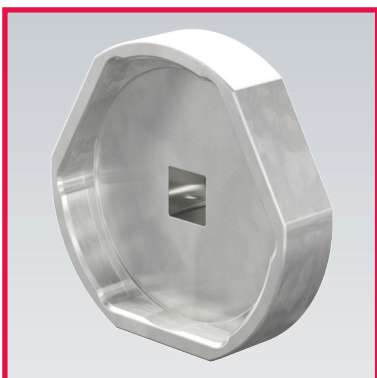
1. Removal tool

part number: 910550



2. Screw-in/screw-out tool:

part number: 550426.8



3. Screw-in/screw-out tool:

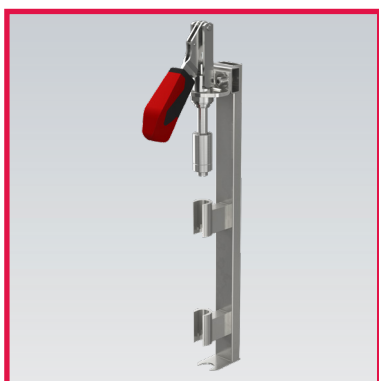
part number: 550425.7

TOOLS

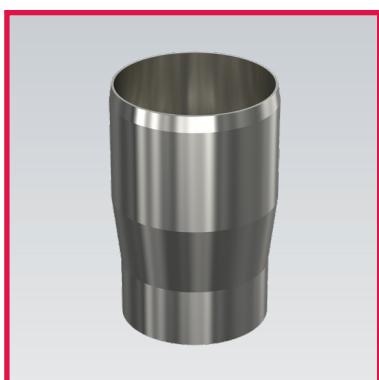
EXTRACTOR TUBE ET-AC-S / ET-GR-S



4. Mounting/Demounting haft for the safety latch:
part number: 550431.2



5. Assembling/Disassembling tool:
part number: 910555



5. Assembling tool:
part number: 028250.2

TECHNICAL INFORMATION

EXTRACTOR TUBE ET-AC-S / ET-GR-S

6. Technical Information

ET-AC-S



ET-GR-S

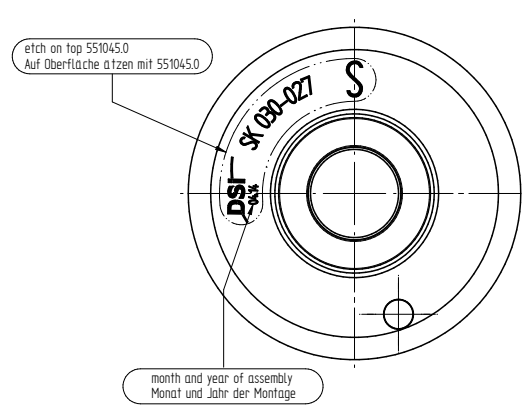
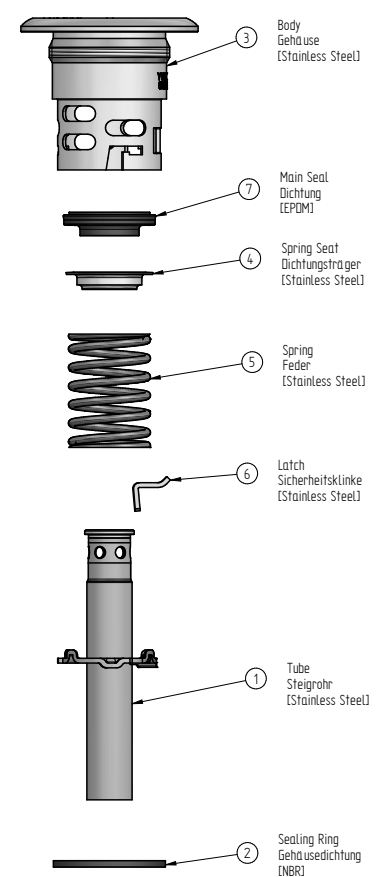
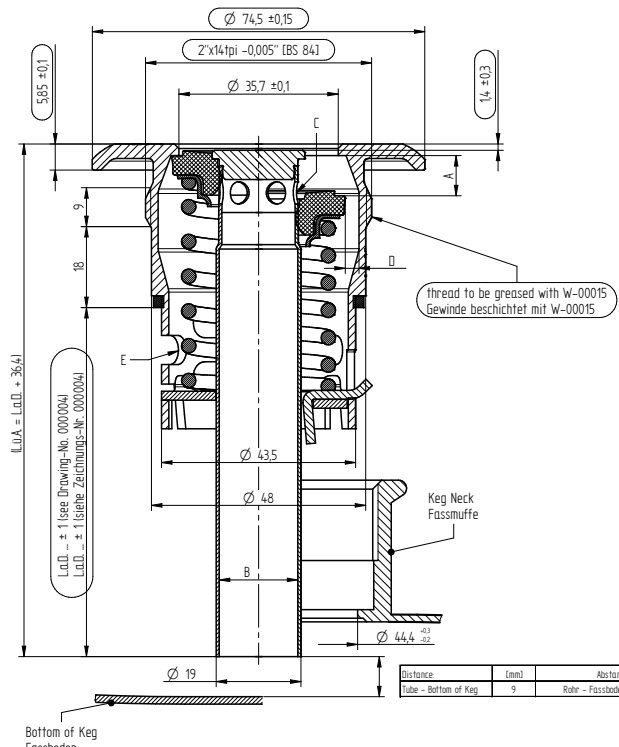


TECHNICAL INFORMATION

EXTRACTOR TUBE ET-AC-S



EN	DE	EN	DE		
Product Information	Produktinformationen	Stroke and Passages	Hub und Öffnungsquerschnitte		
according to DIN 6650, DIN 3542 and FDA regulations	Produkt nach DIN 6650, DIN 3542 und FDA Bestimmungen	I main seal part 7 - part 3	Dichtung Pos. 7 - Pos. 3	A	9 - 12 mm
for specific length calculation keg drawing or H3-dimension is needed according to DIN 6647	Für konkrete Längenberechnung wird die Keg-Zeichnung oder das H3-Maß nach DIN 6647 benötigt	II through inner tube ϕ 17,6 part 1	innerhalb des Steigrohres ϕ 17,6 Pos. 1	B	240 mm ²
gaslight	gasdicht	6 holes in part 1	6 Löcher in Pos. 1	C	120 mm ²
mounting torque: 80±5 Nm	Anzugsdrehmoment: 80±5 Nm	III through outer tube part 3 - part 7	aufßerhalb des Steigrohres Pos. 3 - Pos. 7	D	470 mm ²
temperature resistance short-time 160°C	Temperaturbeständigkeit kurzfristig 160°C	in part 3	in Pos. 3	E	980 mm ²
for more information www.dispensegroup.com	für mehr Informationen www.dispensegroup.com				



DSI is the property of Dispense Systems International. The information is confidential and should not be copied for any other purpose without the prior written permission of DSI.

Pos.	Quantity	Art.-No.	Title
1	1	000002	Master Down Tube Assembly (loose Safety)
2	1	025130.6	Sealing Ring
3	1	028092.9	Body AC 2"x14tpi
4	1	551082.4	Spring Seat
5	1	551083.5	Spring
6	1	552468.4	Safety Latch
7	1	610116	Main Seal 160°C saturated steam

customer-specific information kundenspezifische Angaben	
Art.-Nr. Part No.	
L.a.D. [mm]	
Länge ab Dichtkante length to sealing	
Länge über alles length over all	

weight calculation ± 5% / Gewichtsrechnung ± 5%

$$m [g] = L.a.D. [mm] \times 0,315 \frac{g}{mm} + 300g$$

PRODUCT	REMARKS	LAST CHANGE	SCALE 1:51 (1:125)	WEIGHT VOLUME
	DIN ISO 2768-MS PROCESSED DIN EN ISO 13702 FINISH		MATERIAL	
	DATE NAME			
	06.12.2013 jasko			
	AM 3024			
	09.07.2015 jasko			
	14.04.2015 jasko			
TITLE			Master Extractor Tube AC S 2"x14tpi	
DRAWN BY			PROJ. TECH. EXP. / DRAWN BY	
DSI			A2 000001	
ALTERATIONS			SHEET 1	
DATE NAME AM			1 SHYS	
PROD. DEV. GERMANY			REPL. BY:	

CONNECTIONS

EXTRACTOR TUBE ET-AC-S / ET-GR-S

6. Connections

ET-AC-S

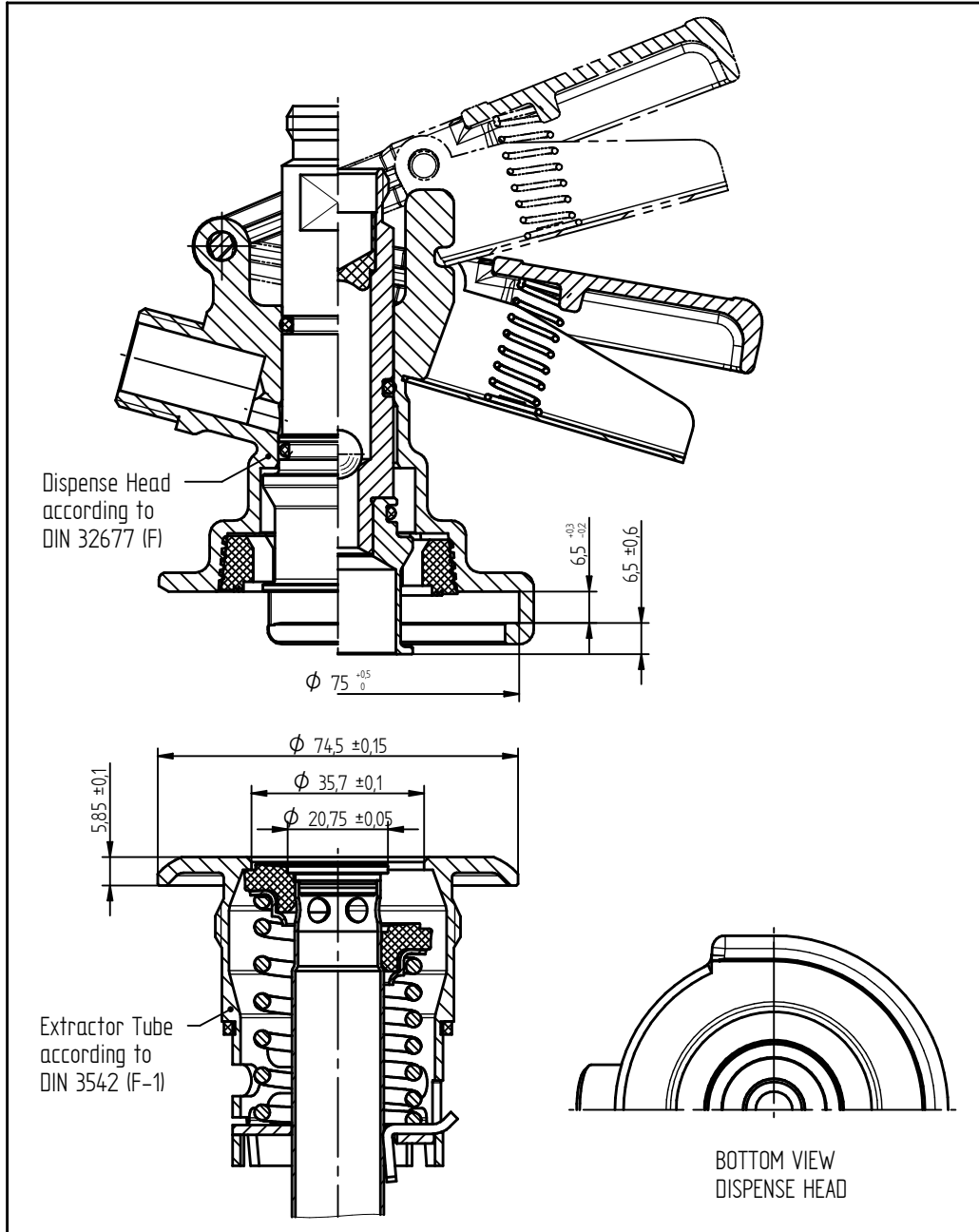


ET-GR-S



CONNECTIONS

EXTRACTOR TUBE ET-AC-S



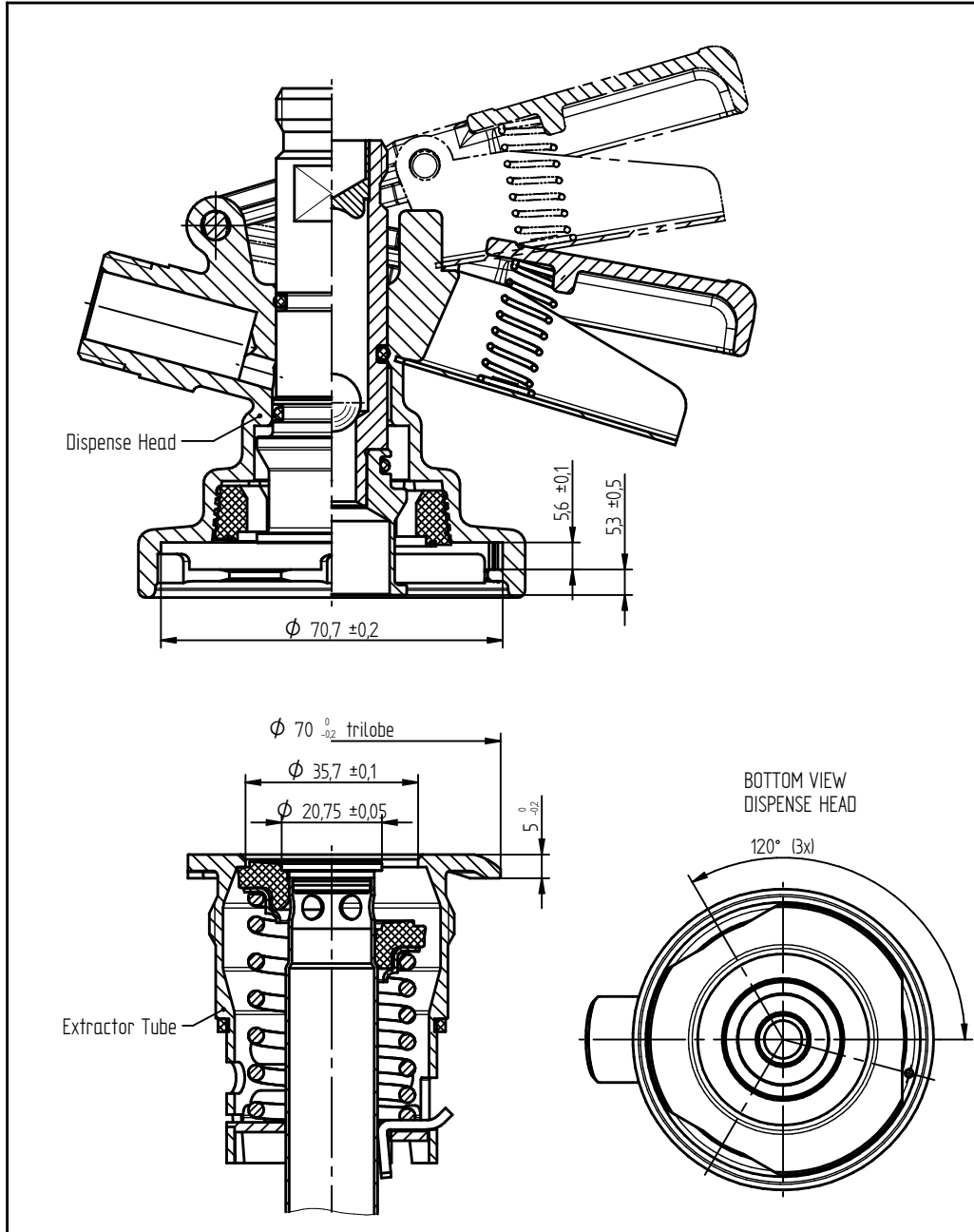
DSI Getränkearmaturen GmbH.
 If in doubt, please ask.
 Samples are required after each revision.

This drawing is the property of Dispense Systems International.
 The information is confidential and should not be copied for
 any other purpose without the prior written permission of

PRODUCT		REMARKS		ROUGHNESS	SCALE	WEIGHT VOLUME	
					MATERIAL		
		DATE	NAME		TITLE		
		DRAWN	04.11.2002	AH		Flat Type Connection System AC S	
		APPR.					
		NORM					
		PROD. DEV.	DE				
				PROJ. METHOD	FORMAT	DRAWING NUMBER	SHEET
					A4	D-184713	1
A updated		22.03.2013	Kunze			2 SHTS.	
ALTERATIONS		DATE	NAME	ORIGIN	REPL.	REPL. BY	


CONNECTIONS

EXTRACTOR TUBE ET-GR-S



DSI Getränkeautomaten GmbH.
 If in doubt, please ask.
 Samples are required after each revision.

This drawing is the property of Dispense Systems International.
 The information is confidential and should not be copied for
 any other purpose without the prior written permission of

PRODUCT		REMARKS		ROUGHNESS	SCALE	WEIGHT VOLUME	
					MATERIAL		
		DATE	NAME		TITLE		
		DRAWN	05.11.2002	AH	Flat Type Connection System GR S		
		APPR.					
		NORM					
		PROD. DEV.	DE				
				PROJ. METHOD	FORMAT	DRAWING NUMBER	SHEET
				REPL.			1
A updated		DATE	27.03.2013	NAME	Kunze	DRAWING NUMBER	2 SHTS.
ALTERATIONS		DATE		NAME		REPL. BY	



Germany

DSI Getränkearmaturen GmbH
Oberster Kamp 20
59069 Hamm
Phone: +49 (0) 23 85 772 100
Fax: +49 (0) 23 85 772 249
sales@dsi-group.net
www.dispensegroup.com



USA

Taprite
3248 Northwestern Drive
San Antonio
Texas 78238
Phone: +1 (210) 523 08 00
Fax: +1 (210) 520 30 35
sales@taprite.com
www.taprite.com



ITALY

Vin Service S.r.l.
Via G.Falcone 26/34
24050 Zanica - Bergamo - Italy
Phone: +39 (035) 672 361
Fax: +39 (035) 672 699
info@vinservice.it
www.vinservice.com



United Kingdom

Touch and Pour Systems Ltd
Rufford House
Darwin Drive
Sherwood Energy Village
New Ollerton
Nottinghamshire
NG22 9GW
Phone: +44 (0) 1623 836814
Fax: +44 (0) 1623 239224
sales@tapsystems.co.uk
www.tapsystems.co.uk